

The Castle Art Exhibition Programme 2022/23

The Willoughby Gallery

The Castle, Bude, Cornwall : 01288 357300
www.thecastlebude.co.uk



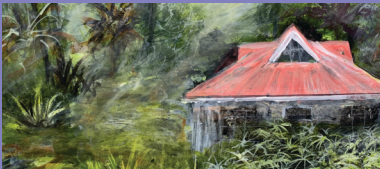
15th April - 5th May Penelope O'Connor 'Needle And Thread'

Living on the beautiful north coast of Cornwall gives me an endless supply of inspiration for my textile pieces. I enjoy being able to express my love of the world around me through the medium of textiles, combining beautiful fabrics to create images with needle and thread.



7th - 26th May Mark James 'Beautiful Bude'

Beautiful Bude through a camera lens, both on the ground and via my drones. Self-taught during lockdown these images are a combination of composites and natural shots designed for fine art and large format. Perfect in any small or large space.



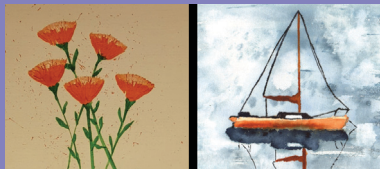
28th May - 16th June Carolyn Wixon 'Three Islands'

A journey through extraordinary times and places from Cornwall to the Kenyan Coast, this exhibition explores how Place can influence art.



18th June - 7th July Bude Art Society 'Annual Exhibition'

The exhibition presents a cross-section of works produced during the previous two covid-disrupted years by our members.



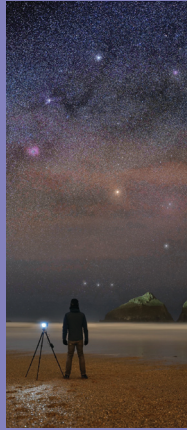
9th - 21st July Terry & Daniel Jourdain, Anthony Jackson 'A Family Affair'

We call this a family affair...two very different, yet talented artists and a photographer; Terry, Anthony and Daniel have combined their talents to offer you an array of artwork and photographic subjects, each one unique in style and talent.



23rd July - 11th August Steve Pinchess 'Houses And Other Animals'

Steve Pinchess, Bude based artist, returns to The Castle with his colourful view on the world around us. Both graphic and sometimes thought provoking, Steve's varied work always has something for someone.



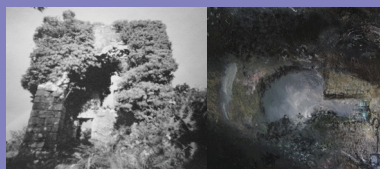
13th August - 8th September Chris Small 'Summerleaze To Summit'

Follow Chris as he explores Cornwall from the varied and captivating coastline to the remote and wild moorlands. Including new unseen images and the stories behind them.



10th September - 6th October Bridget Winterbourne 'Flow And Finesse'

With her love of vibrant colour, Bridget explores traditional forms of art and embraces exciting new abstract techniques. She will be showcasing her latest paintings, fine art prints and cards.



8th - 27th October Duncan Rice & Graham Warren 'Ruins & Monuments'

'Ruins and Monuments' is an ongoing project that combines photography with graphic work and paintings. The subject is the legacy of the Cornish mining industry, the way this has impacted the landscape and the way the landscape has reclaimed the remains.



29th October - 17th November Rosie Burns 'Views And Muse'

Rosie's paintings, in oil and watercolour, depict expansive and dramatic skies, landscapes and coast. The prints in this exhibition handle her muse into the effect of people on the environment.



19th November - 8th December Kernow Creative Partnership 'Radiating The Light'

Seven talented artists are returning to Bude in a new exhibition. The work will include painting and drawing, jewellery, glasswork, woodcraft and printmaking to inspire you this winter season.



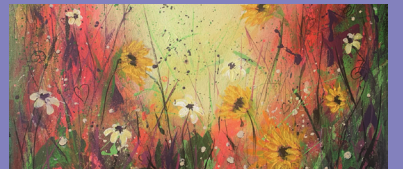
10th December - 5th January Swanskin 'Title'

An exhibition full of surprises from the immensely talented Swanskin Printmakers. These local artists will be showing a range of artwork encompassing various types of printmaking, relating to their individual art practices, resulting in a skilled and a diverse use of the magical art of printmaking.



17th January - 9th February Budehaven 'Our World Of Art'

Showcasing the art works of the talented students of Budehaven Community School.



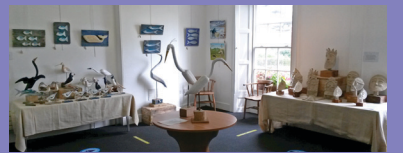
11th February - 2nd March Gloria Bardell 'Blooms And Branches'

A love and appreciation of all things floral and woodland related inspired my new collection of paintings. Everything from flower meadows to vases full of blooms and woodlands full of bluebells are included.



4th - 23rd March Irene Jones & Paul Seed 'Wry Eyes'

In a meeting of mediums the fine art of Irene Jones & the photography of Paul Seed share a view of an often rather droll, wider world.



Also in The
Blanchminster
Room

The Blanchminster Room



15th April - 5th May Steve & Rachel Perham 'Clovelly Then And Now'

Having lived & worked in and around Clovelly all our lives, painting is a form of time travel, a way of remembering those who were part of this place. Painting brings us closer to those we owe our memories to and keeps them alive in the thoughts of others.



7th - 26th May Textile Maids 'The Written Word'

Each Textile Maid has individually explored her visual interpretation of The Written Word in this exciting exhibition of contemporary textile art, celebrating one of the most expressive forms of communication.



28th May - 16th June Deborah Mills 'Of Land And Sea'

An exhibition of art and ceramics celebrating Deborah's connection with land and sea and the influences and inspirations that have been drawn from living half of her life on the coast and half in the countryside of Devon & Cornwall.



18th June - 7th July Rachel Corney 'Secret Life Of Rockpooling'

Rock pooling is a joy that many local people will have experienced living by the coast. This exhibition focuses on some of the fascinating species that are revealed as the tide recedes.



9th - 21st July Sew To Speak 'Annual Exhibition'

Sew To Speak meet on Wednesday at the Parkhouse Centre. They do all aspects of hand needle craft, embroidery, appliqué and textile art. They are a friendly group with lots of chat hence their name. Everyone is welcome whatever your ability.



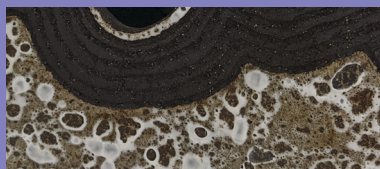
23rd July - 11th August Lorraine Golding 'Aspire To Inspire'

My selection of artwork reflects my enjoyment to paint and draw a variety of subjects and in different mediums. I work in Watercolour, Acrylic, Gouache, Pastels, Pen & Wash.



13th August - 8th September Angie Seaway 'Rewilding'

All new work especially created for The Castle. Rewilding features happy, colourful and bright paintings which relish and celebrate our natural world. All sizes and prices.



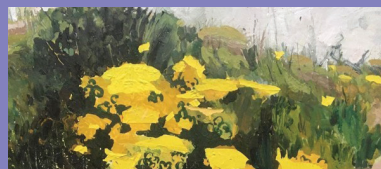
10th September - 6th October Rock Pool Potters 'Moor To Shore'

Ceramics inspired by the dramatic forms, colours and textures seen in the land and coasts of Cornwall, both from the ancient geology and the abundant life in flora and fauna.



8th - 27th October Joan Crofts 'Love Where You Live'

Jo is a printmaker based on the Cornwall/Devon border, drawing inspiration from the landscape and natural world. She uses a range of printmaking processes, sometimes Eco printing, using nature directly.



29th October - 17th November The Burton At Bideford 'En Plein Air'

The exhibition features 30 works from The Burton at Bideford's recent Environmental Artist Commission programme 2018 - 2022 and items from their collection from artists working in the natural environment and their response to climate change. Photographs, ceramics and paintings respond in unique ways to see the world.



19th November - 8th December Kathy Nettles 'Autumn: My Horses In The Landscape'

A Devon-based artist who creates vibrant paintings that are a fusion of abstraction and realism. Cathryn works primarily in oil and cold wax on board and canvas. Her work centres on the natural landscape and her horses.



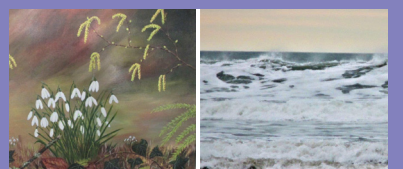
10th December - 5th January Bryan Sentence 'Beachcomber'

A lifelong beachcomber, Bryan Sentence works in wood, clay and paint finding many of his ideas and often his materials on the beaches of North Cornwall.



17th January - 9th February Cornwall Adult Education 'Art And Craft'

The Gregson Centre offers a wide range of creative courses providing a friendly and supportive learning environment. The work in this exhibition shows the vast diversity of styles and disciplines, skills and talents of learners at the Gregson Centre.



11th February - 2nd March Jill Bolton & Barbara Atkins 'Talented Twosome-Take 2'

Art and Craft Exhibition. Barbara and Jill will be exhibiting seascape photographs, watercolour dog portraits & beach scenes, acrylic flora and fauna on canvas, novelty plaques on slate, encased glass and driftwood scenes, as well as home-made cards for all occasions.



25th March - 13th April Gwynnala 'Artists & Makers'

Gwynnala are a group of friends, Artists and Makers who have been exhibiting together throughout Cornwall and Devon. The group works across a diverse range of styles, mediums and subjects and includes Paintings, Pottery, Prints and Textiles.

Also in The
Willoughby
Gallery